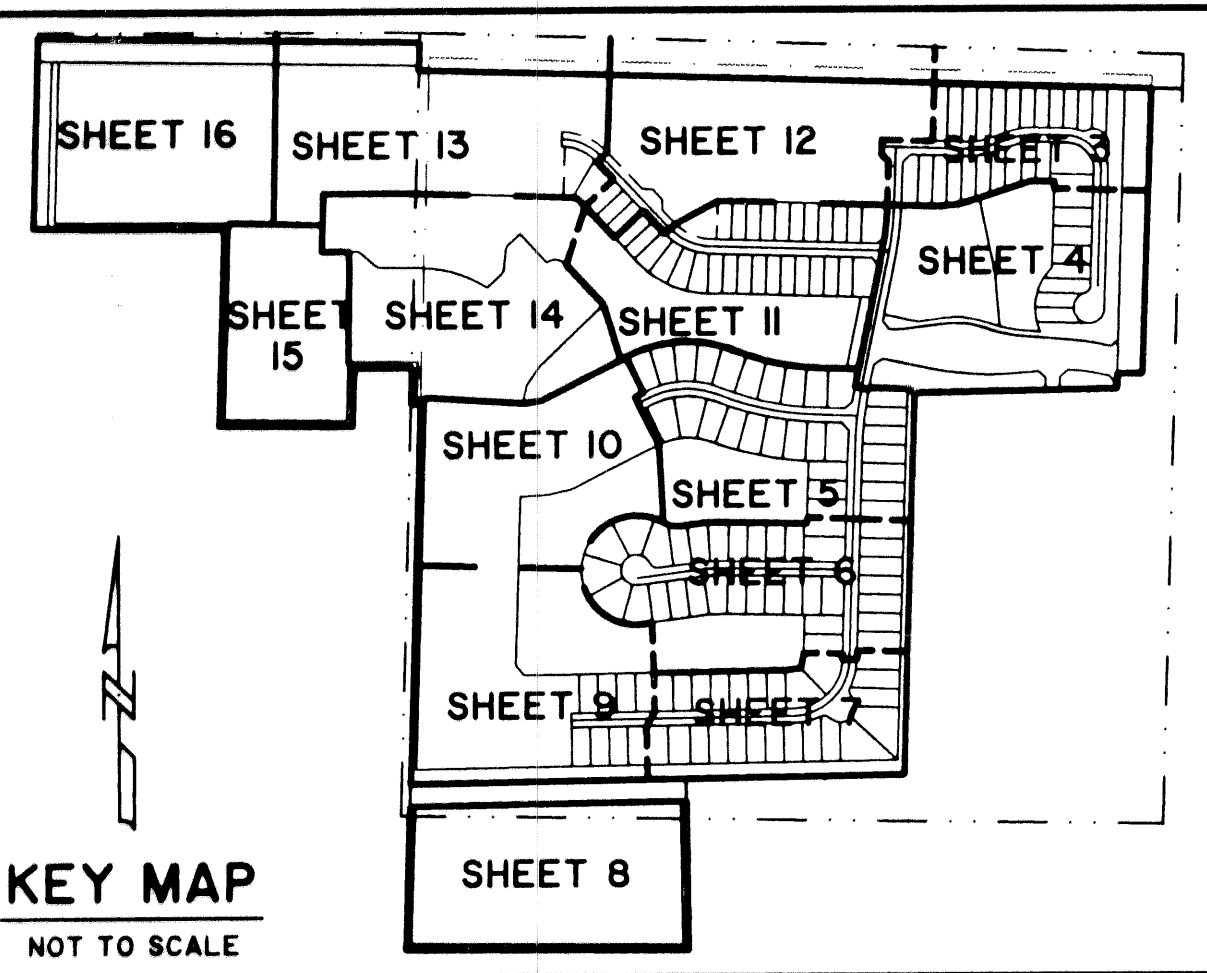
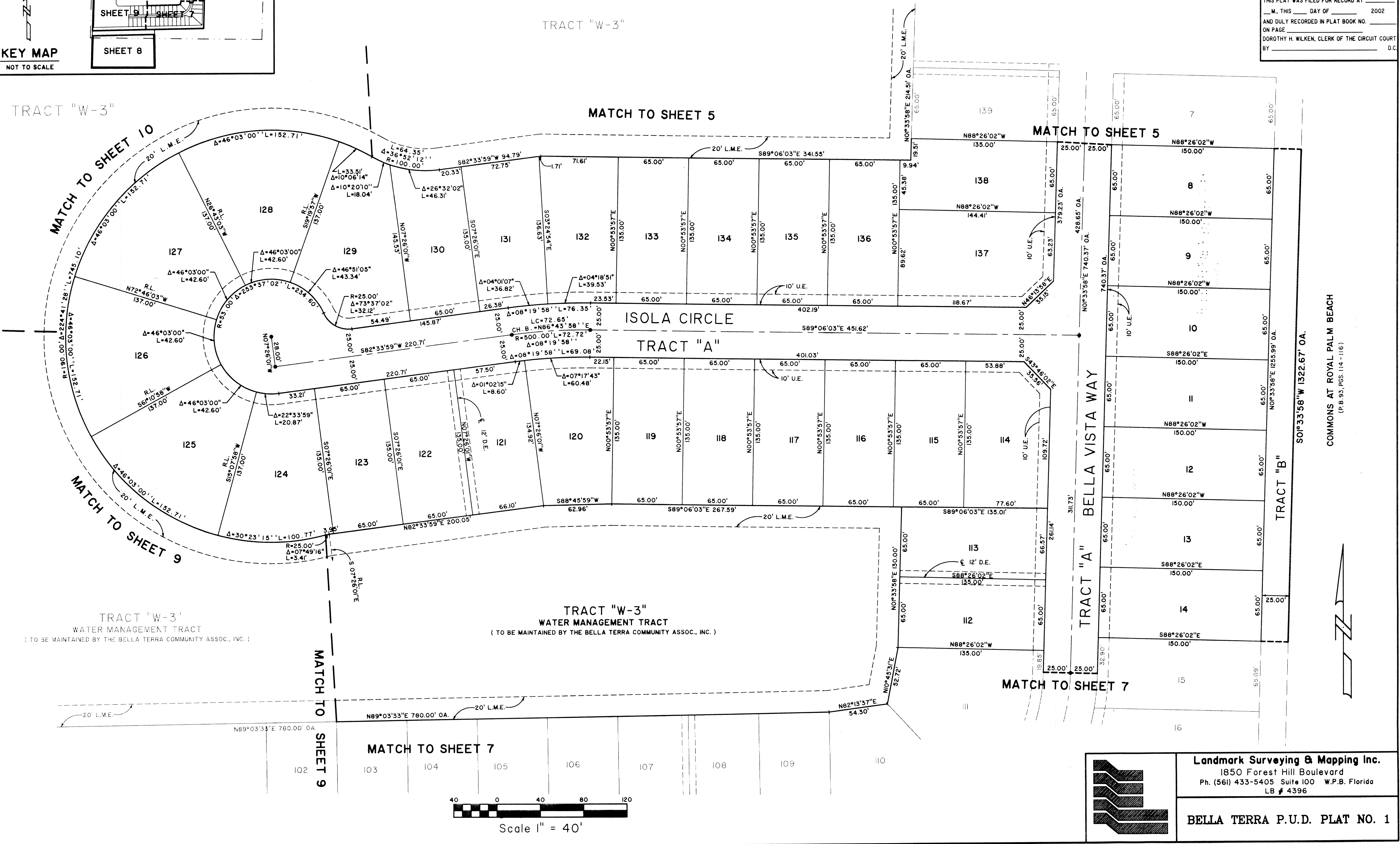


BELLA TERRA P.U.D. PLAT NO. 1

BEING A REPLAT OF A PORTION OF BLOCK 9, PALM BEACH FARMS COMPANY PLAT NO. 3, AS RECORDED IN PLAT BOOK 2, PAGES 45 THROUGH 54, PUBLIC RECORDS OF PALM BEACH COUNTY, FLORIDA AND A PORTION OF SECTION 36, TOWNSHIP 43 SOUTH RANGE 41 EAST, VILLAGE OF ROYAL PALM BEACH, PALM BEACH COUNTY, FLORIDA.
FEBRUARY, 2002 SHEET 6 OF 16



STATE OF FLORIDA SS
COUNTY OF PALM BEACH
THIS PLAT WAS FILED FOR RECORD AT _____
M., THIS _____ DAY OF _____ 2002
AND DULY RECORDED IN PLAT BOOK NO. _____
ON PAGE _____
DOROTHY H. WILKEN, CLERK OF THE CIRCUIT COURT
BY _____ D.C.



TRACT "W-3"

MATCH TO SHEET 5

MATCH TO SHEET 5

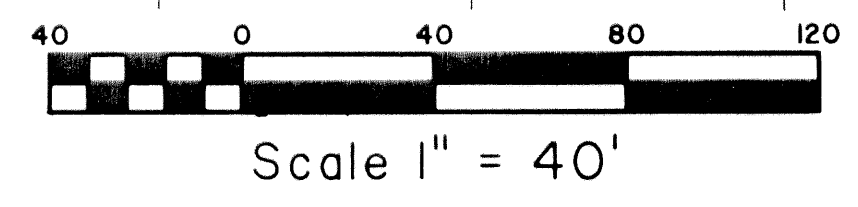
MATCH TO SHEET 10

MATCH TO SHEET 9

MATCH TO SHEET 9

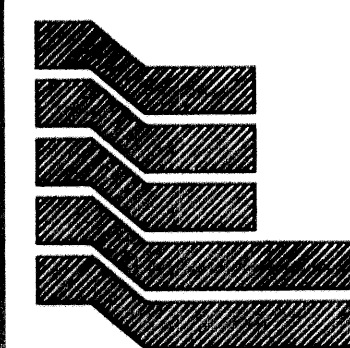
MATCH TO SHEET 7

MATCH TO SHEET 7



Scale 1" = 40'

COMMONS AT ROYAL PALM BEACH
(P.B. 93, PGS. 114 - 116)



Landmark Surveying & Mapping Inc.
1850 Forest Hill Boulevard
Ph. (561) 433-5405 Suite 100 W.P.B. Florida
LB # 4396

BELLA TERRA P.U.D. PLAT NO. 1